



**GOLF DESIGN**

**GARY BRAWLEY GOLF DESIGN**

*Traditional Values, Innovative Design, Sustainable Results*



**Gary Brawley, Member American Society of Golf Course Architects**  
Peoria, Arizona USA

# ABOUT GARY BRAWLEY



## MY STORY

I grew up playing the game of golf and spent many of my summer days as a young boy at the local golf course. Something about the traditions of the game put a desire in me to become a golf course architect. From that point, I have made a commitment to myself to become the best at what I do. Along the way, I have had a lot of great influences that have helped mold me into the golf architect I am today. I honor the traditions of the game by respecting everyone and every project with honesty and integrity. I desire to leave the game of golf better than when I started.

I live in Peoria, Arizona with my wife Tiffany, and our four children. As a family we enjoy playing golf, baseball, camping and fishing.

## EDUCATION

Bachelor of Science  
Major in Landscape Architecture  
Colorado State University, 1995

## EXPERIENCE

The Olde Course / Cattail Creek  
Loveland, Colorado  
Golf Course Maintenance 1993 - 1995

GolfPlan - Fream & Dale  
Santa Rosa, California  
Design Associate 1995 - 1996

Wadsworth Golf Construction  
Buckeye, Arizona  
Estimator 1996 - 1997

Gary Panks Associates - Golf Course Architects  
Scottsdale, Arizona  
Design Associate 1997 - 2000  
Senior Golf Architect 2000 - 2003

Tripp Davis and Associates - Golf Course Architects  
Norman, Oklahoma - Peoria, Arizona  
Senior Golf Architect - 2003 - 2014

**GB**  
**GARY BRAWLEY GOLF DESIGN**  
Peoria, Arizona  
Established 2014

## PROFESSIONAL AFFILIATIONS

American Society of Golf Course Architects

United States Golf Association

Arizona Golf Association

Cactus and Pine -  
Arizona Chapter of the Golf Course  
Superintendents Association of America

Golf Academy of America - Arizona Advisory Board



# PROJECT EXPERIENCE - GARY BRAWLEY GOLF DESIGN

The following list of projects represent golf courses that Gary Brawley Golf Design is currently engaged with or has completed.

**Eagles Nest Golf Course**  
Goodyear, Arizona  
Scope: Golf Course Master Plan

**Lakes East Golf Course**  
Sun City, Arizona  
Scope: Turf Reduction and Conversion to Low- Water Landscape

**Legacy Golf Resort**  
Phoenix, Arizona  
Scope: Professional Consulting



**Mesa Country Club**  
Mesa, Arizona  
Scope of Service: Golf Course Master Plan and Annual Renovation Work

**North Golf Course**  
Sun City, Arizona  
Scope: Conceptual Turf Reduction and Conversion to Low- Water Landscape



**Oakcreek Country Club**  
Sedona, Arizona  
Scope: Golf Course Master Plan

**PING World Headquarters**  
Phoenix, Arizona  
Scope: Practice Facility Renovation

**Quail Creek Country Club**  
Green Valley, Arizona  
Scope: Golf Course Master Plan

**Riverview Golf Course**  
Sun City, Arizona  
Scope: Conceptual Turf Reduction and Conversion to Low- Water Landscape

**Sagewood**  
Phoenix, Arizona  
Scope: Design of New Putting Course

**South Golf Course**  
Sun City, Arizona  
Scope: Tee Renovation and Conceptual Turf Reduction and Conversion to Low- Water Landscape

**Starfire Golf Club**  
Scottsdale, Arizona  
Scope: New Practice Facility

**Trilogy Golf Club at Vistancia**  
Peoria, Arizona  
Scope: Professional Consulting

**Tuscany Falls Golf Club**  
Goodyear, Arizona  
Scope: Professional Consulting

**White Mountain Country Club**  
Pinetop, Arizona  
Scope: Practice Facility Renovation



# PROJECT EXPERIENCE WITH GARY PANKS ASSOCIATES

The following list of projects represent golf courses that Gary Brawley served as Design Associate or Senior Golf Architect and provided a varying degree of design input while working with Gary Panks.

## NEW PROJECTS

### **Aguila Golf Course**

Phoenix, Arizona  
Arizona Golf Association  
Public Links Championship

### **FireRock Country Club**

Fountain Hills, Arizona



Legacy Golf Resort

### **Legacy Golf Resort**

Phoenix, Arizona  
2000 LPGA Standard Register Ping

### **Seville Golf and Country Club**

Gilbert, Arizona

### **Trilogy Golf Club at La Quinta**

La Quinta, California  
2003 - 2006 PGA Tour Skins Game



Trilogy Golf Club at Redmond Ridge

### **Trilogy Golf Club at Redmond Ridge**

Redmond, Washington

### **Trilogy Golf Club at Vistancia**

Peoria, Arizona  
Golf Digest 5 Star Designation

### **Twin Warriors Golf Club**

Bernalillo, New Mexico  
2009 PGA of American Club Professional  
Championship

### **Whirlwind Golf Club - Devils Claw Course**

Gila Indian Reservation, Arizona  
2002/03 Gila River Nationwide Tour  
Classic

### **Whirlwind Golf Club - Cattail Course**

Gila Indian Reservation, Arizona  
2004 - 2005 Nationwide Tour  
Championship

## RENOVATIONS

### **Briarwood Country Club**

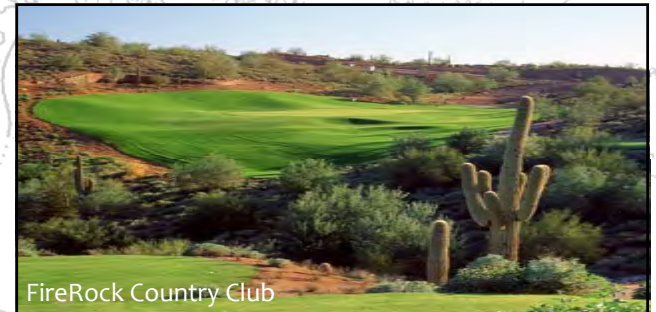
Sun City West, Arizona

### **Riverside Country Club**

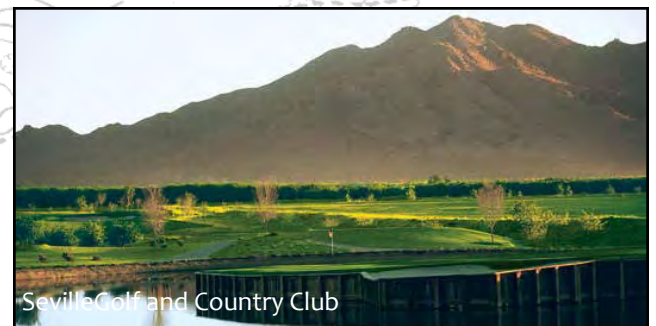
Bozeman, Montana



Whirlwind Golf Club - Cattail Course



FireRock Country Club



Seville Golf and Country Club

# PROJECT EXPERIENCE WITH TRIPP DAVIS ASSOCIATES

The following list of projects represent golf courses that Gary Brawley worked in various roles in conjunction with Tripp Davis on the design, plan production and construction observation, while at Tripp Davis and Associates.

## NEW PROJECTS

### **Old American Golf Club**

The Colony, Texas  
Golf Magazine Top 5 Course You Can Play in Texas

### **Orvis Shorefox Golf Club**

Granby, Colorado (On Hold)

### **Trilogy Golf Club at Avalea**

Maricopa, Arizona (On Hold)

### **Trilogy Golf Club at Ocala Preserve**

Ocala, Florida



### **Turtle Dunes Country Club**

Acapulco, Mexico

### **Eco-City International Golf Club**

Tianjin, China  
Audubon International Classic Sanctuary

## RENOVATIONS and MASTER PLANS

### **Briarwood Country Club**

Sun City West, Arizona



### **Engineers Country Club**

Roslyn, New York  
Golfweek Top 100 Classic Course

### **Lakes East Golf Course**

Sun City, Arizona

### **Lakes West Golf Course**

Sun City, Arizona

### **Meadow Brook Club**

Jericho, New York

### **Mesa Country Club**

Mesa, Arizona

### **Moon Valley Country Club**

Phoenix, Arizona

### **North Golf Course**

Sun City, Arizona

### **Preston Trail Golf Club**

Dallas, Texas

### **Riverview Golf Course**

Sun City, Arizona

### **South Golf Course**

Sun City, Arizona

### **Quail Run Golf Course**

Sun City, Arizona  
Audubon International Cooperative Sanctuary

### **Whippoorwill Club**

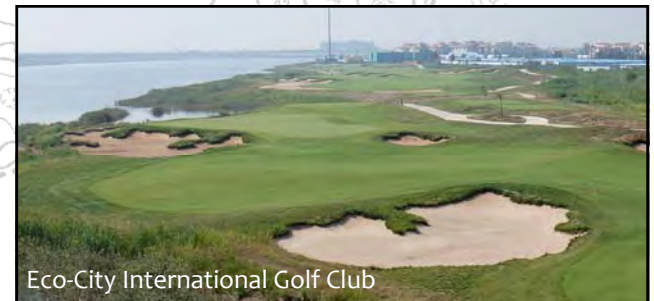
Armonk, New York  
Golfweek Top 100 Classic Course

### **Willowbrook Golf Course**

Sun City, Arizona

### **Willowcreek Golf Course**

Sun City, Arizona



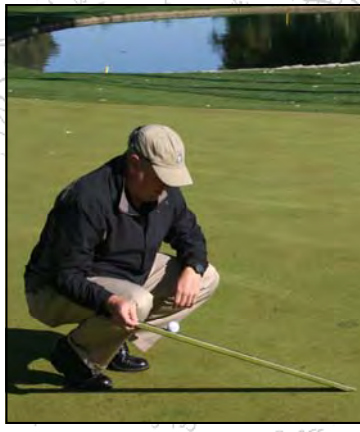
# GOLF COURSE RENOVATION - A MASTER PLAN FOR THE FUTURE

## PROCESS

1. Evaluation
2. Master Plan
3. Budget
4. Schedule / Phase
5. Design
6. Construction

The game of golf is constantly in a course of change. Many golf courses today are looking at ways to improve their facilities, either at one time as one big project or smaller projects done over a period of time. The golf course Master Plan is a key tool to guide a facility with any type of change.

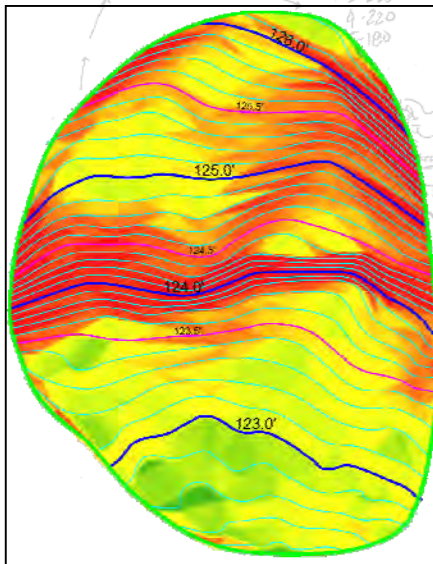
**“When the WHY behind a project can be understood and communicated properly, it will be the foundation for the WHAT, the HOW and the HOW MUCH.” - Gary Brawley, ASGCA**



COPPER TEES (QUAIL)									
SEQUENCE OF HOLES					RANGE OF HOLES				
Arranged in Playing Order					Arranged According to Length				
Par 36									
YARDS	PAR	PAR 5	PAR 4	PAR 3	YARDS	PAR	PAR 5	PAR 4	PAR 3
600					600				
550					550				
500					500				
450					450				
400					400				
350					350				
300					300				
250					250				
200					200				
150					150				
100					100				
50					50				
0					0				
HOLE #	1	2	3	4	5	6	7	8	9
LENGTH (Y)	327	139	329	332	435	218	460	126	350
PAR	4	3	4	4	5	4	5	3	4

COPPER TEES (QUAIL)									
SEQUENCE OF HOLES					RANGE OF HOLES				
Arranged in Playing Order					Arranged According to Length				
Par 36									
YARDS	PAR	PAR 5	PAR 4	PAR 3	YARDS	PAR	PAR 5	PAR 4	PAR 3
600					600				
550					550				
500					500				
450					450				
400					400				
350					350				
300					300				
250					250				
200					200				
150					150				
100					100				
50					50				
0					0				
HOLE #	4	8	2	7	3	1	5	9	6
LENGTH (Y)	126	139	218	327	329	332	350	435	460
PAR	3	3	4	4	4	4	4	5	5



**GREEN C1**  
Existing green has very little playable area under 2.5% making the distribution of play and wear very challenging, especially with green speeds over 10.5. In addition, surface drainage off of the green is impeded by the built-up around the green, creating poor agronomic conditions at the edge of the green. Recommendation is to renovate the green, expanding as possible to provide more hole locations (there is 3-5 pinnable areas ~700 sqft each) and repair surface drainage off of green. Open up and action approach into green to improve option to run a ball onto the green of this longer par 4. New green to be built per USGA recommendation for putting green construction.

**BUNKER C1B**  
If green is rebuilt reposition bunker to open up approach into the green; if green is not rebuilt, recommendation is to rebuild bunker in place. In both cases slopes of bunker face should not exceed the angle of repose of the bunker sand. Keep points of access in and out of the bunker soft. New bunker to include sub-surface drainage, bunker liner to help prevent the migration of sub-surface rocks into the sand and new bunker sand.

**BUNKER C1A**  
Good strategic bunker in balance with Bunker C1B. Depth of bunker along line of play makes it extremely challenging to really advance a shot very far out of the bunker thus leaving the golfer with a relatively mid-length approach shot. In addition, the size of the bunker is much larger than it needs to be to have the same strategic impact. Re-stage bunker and lower green side edge. Keep points of access in and out of the bunker soft. Slope of face should not exceed the angle of repose of the bunker sand. New bunker to include sub-surface drainage, bunker liner to help prevent the migration of sub-surface rocks into the sand and new bunker sand.

**TEE C1E, C1F**  
Build new forward tees to provide additional options for all golfers. Align tee with direction of play. Size appropriately according to distribution of play. Build tee using 4" layer of sand. Pitch surface 1% away from cart path. Walk-up to tee will be in turf and slope should not exceed 5:1 or 20%.

**TEE C1D**  
Rebuild tee. Align tee with direction of play. Size appropriately according to distribution of play. Build tee using 4" layer of sand. Pitch surface 1% away from cart path. Walk-up to tee should be free of any "steps" and consistent with established design guidelines.

**TEE C1C**  
Rebuild tee. Align tee with direction of play. Size appropriately according to distribution of play. Build tee using 4" layer of sand. Pitch surface 1% away from cart path. Walk-up to tee should be free of any "steps" and consistent with established design guidelines.

**TEE C1A**  
Rebuild tee. Align tee with direction of play. Size appropriately according to distribution of play. Build tee using 4" layer of sand. Pitch surface 1% away from cart path. Walk-up to tee should be free of any "steps" and consistent with established design guidelines.

**TEE C1B**  
Rebuild tee. Align tee with direction of play. Size appropriately according to distribution of play. Build tee using 4" layer of sand. Pitch surface 1% away from cart path. Walk-up to tee should be free of any "steps" and consistent with established design guidelines.

TEE	Existing	Proposed
Black	417	414
Gold	387	381
Silver	348	348
Copper	304	301
New-1	0	271
New-2	0	262

SCALE 1" = 100'-0"

## Golf Course Evaluation

## Golf Course Master Plan

# GOLF COURSE CONSTRUCTION DRAWINGS

## DESIGN SERVICES

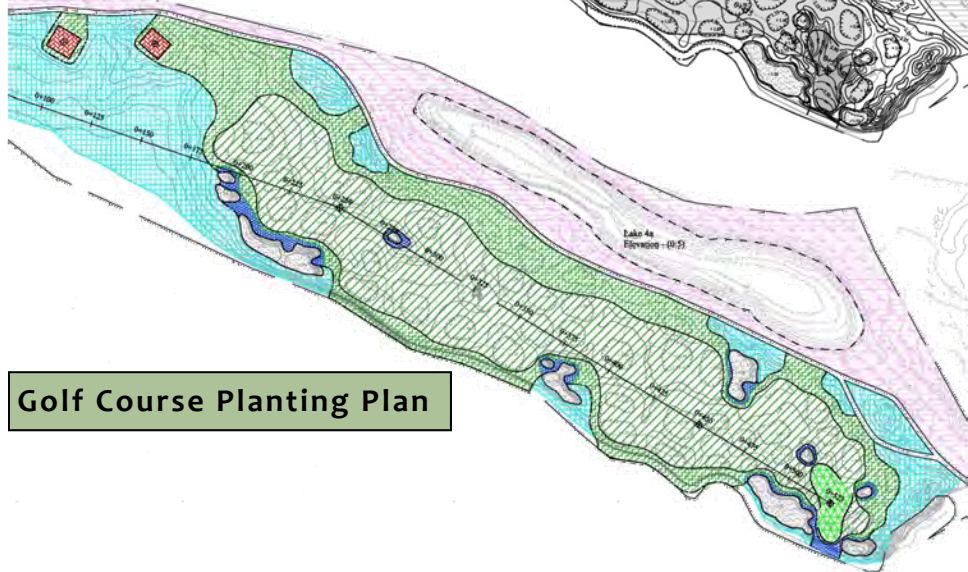
1. Grading Plan
2. Cut / Fill Plan
3. Drainage Plan
4. Grassing Plan
5. Construction Details
6. Project Specifications

As the Owner, one of the most important things to know in regards to any upcoming project will be the cost. Whether a new project or a renovation, there is no substitution for the preparation of detailed construction documents, consisting of plans, construction details, and construction specifications. Each project is unique and thus too are the plans and specifications.

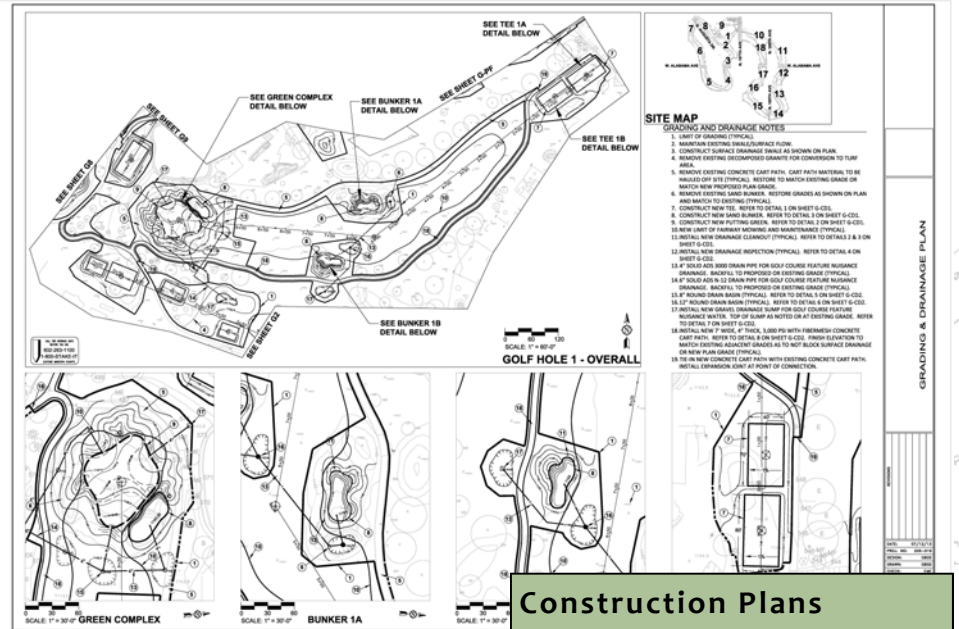
**“Without a doubt, the construction documents produced by Gary Brawley are some of the best in the industry. We know when we bid a job that Gary has thoroughly thought through every last detail and scenario, and that is clearly communicated to us, which in turn allows us to be very competitive when bidding his work.” Mark Slugocki, VP Wadsworth Golf Construction**



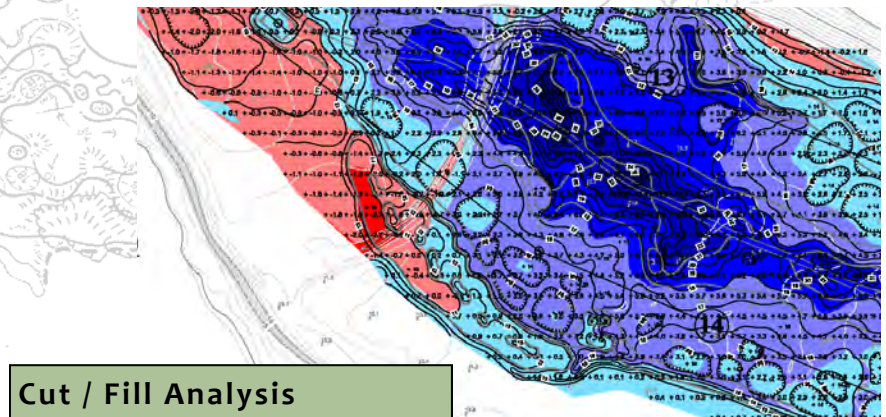
Golf Course Grading Plan



Golf Course Planting Plan



Construction Plans



Cut / Fill Analysis

# GOLF COURSE PRE-CONSTRUCTION SERVICES

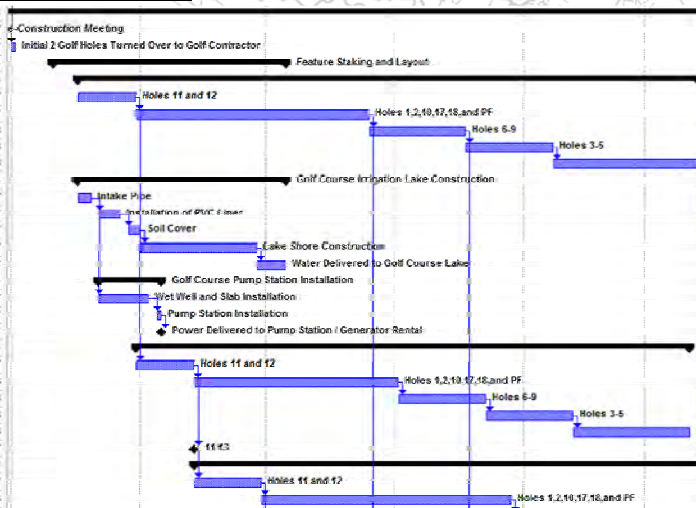
## PRE-CONSTRUCTION SERVICES

1. Golf Course Budget
2. Golf Course Construction Schedule
3. Request for Qualifications
4. Invitation to Bid
5. Distribution of Project Documents
6. Facilitate Pre-Bid Meeting
7. Detailed Line-Item Bid Review
8. Owner/Contractor Contract Review
9. Pre-Construction Meeting
10. Review of Material Submissions

With a background in golf course construction, Gary Brawley brings a unique perspective to this phase of the project, and one that makes him extremely valuable. From assisting the Owner with bid reviews and contracts to facilitating pre-construction meetings, Gary insures the projects get off to good starts.

**"I consider Gary a integral and valuable part of my team. His specific knowledge of the project and process bring a tremendous level of comfort to me when we are considering projects with price tags in the millions of dollars. I can honestly say that retaining Gary Brawley has been one of the best investments we have made, and I would hire him again and again."**  
**Jan Ek, General Manager - Recreation Centers of Sun City**

Activity	Days	Start	End
<b>GOLF COURSE CONSTRUCTION</b>	303 days	Mon 9/24/07	Thu 11/29/08
Pre-Construction Meeting	2 days	Mon 9/24/07	Mon 9/24/07
Initial 2 Golf Holes Turned Over to Golf Contractor	1 day	Mon 10/1/07	Mon 10/1/07
Feature Staking and Layout	40 days	Thu 10/16/07	Wed 12/5/07
Feature Shaping	107 days	Wed 10/17/07	Thu 3/13/08
Holes 11 and 12	10 days	Wed 10/17/07	Tue 10/30/07
Holes 1, 2, 10, 17, 18, and PF	40 days	Wed 10/24/07	Tue 12/25/07
Holes 8-9	17 days	Wed 12/26/07	Thu 1/17/08
Holes 3-5	15 days	Fri 1/18/08	Thu 2/7/08
Holes 13-16	25 days	Fri 2/8/08	Thu 3/13/08
<b>Golf Course Irrigation Lake Construction</b>	36 days	Wed 10/17/07	Wed 12/5/07
Intake Pipe	3 days	Wed 10/17/07	Fri 10/19/07
Installation of PVC Cover	5 days	Mon 10/22/07	Fri 10/26/07
Soil Cover	3 days	Mon 10/29/07	Wed 10/31/07
Lake Shore Construction	20 days	Thu 11/1/07	Wed 11/28/07
Water Delivered to Golf Course Lake	5 days	Thu 11/29/07	Wed 12/5/07
<b>Golf Course Pump Station Installation</b>	11 days	Mon 10/22/07	Mon 11/5/07
Wet Well and Slab Installation	10 days	Mon 10/23/07	Fri 11/2/07
Pump Station Installation	1 day	Mon 11/5/07	Mon 11/5/07
Power Delivered to Pump Station / Generator Rental	3 days	Mon 11/5/07	Mon 11/5/07
<b>Golf Course Drainage</b>	95 days	Wed 10/31/07	Tue 3/11/08
Holes 11 and 12	10 days	Wed 10/31/07	Tue 11/13/07
Holes 1, 2, 10, 17, 18, and PF	35 days	Wed 11/14/07	Tue 2/10/08
Holes 8-9	15 days	Wed 12/3/07	Tue 12/23/07
Holes 3-5	15 days	Wed 12/3/07	Tue 2/12/08
Holes 13-16	20 days	Wed 2/13/08	Tue 3/11/08
Golf Course Superintendent On-Site	2 days	Tue 11/13/07	Tue 11/13/07



## FEATURE CONSTRUCTION

Item	Quantity	Unit	Unit Price
<b>TEE CONSTRUCTION</b>	<b>120,460</b>	<b>SF</b>	
a. 4" Washed Mortar Sand	2,454	TON	
b. Installation of Rootzone Material	1	LS	
c. Material Testing	1	LS	

Item	Quantity	Unit	Unit Price
<b>PRACTICE FACILITY TEE CONSTRUCTION</b>	<b>66,425</b>	<b>SF</b>	
d. Subsurface Drainage (4" Perf w/ Gravel)	3,800	LF	
e. 4" Washed Mortar Sand	1,353	TON	
f. Installation of Rootzone Material	1	LS	
g. Material Testing	1	LS	

Item	Quantity	Unit	Unit Price
<b>BUNKER CONSTRUCTION</b>	<b>62,155</b>	<b>SF</b>	
h. Subsurface Drainage (4" Perf w/ Gravel)	5000	LF	
i. Prep and Edge Bunkers	62,155	SF	
j. Sand Trapper Bunker Liner	0	SF	
k. Purchase Bunker Sand (Pioneer White)	1266	TON	
l. Install Bunker Sand	1266	TON	
m. Material Testing	1	LS	

Item	Quantity	Unit	Unit Price
<b>TRANSITION BUNKER CONSTRUCTION</b>	<b>239,175</b>	<b>SF</b>	
4" Perf w/ Gravel	0	LF	
<b>Budgets</b>	<b>239,175</b>	<b>SF</b>	

## Schedules



Pre-Bid / Pre-Construction Meetings



Eco-City International Country Club



# GOLF COURSE CONSTRUCTION FIELD SERVICES

## FIELD SERVICES

1. Facilitate Pre-Construction Meeting
2. Routine Site Visits
3. Participate in Bi-Weekly Construction Meetings
4. Detailed Site Visit Notes
5. Pay Application Review
6. Approval of Final Shapes and Features
7. Flagging Grass Limits
8. Coordinate Final Closeout

The greatest golf courses in the world were designed and built by Golf Architects who spent time on the ground. My philosophy is no different, hence I limit the number of projects that I can take on at one time so that I can provide a more tailored approach throughout design but also in the field during construction verses a more production service. I also realize that there is a lot a contractor will perform when the timing of the golf architect visit is appropriate thus the importance of communication amongst the team throughout the project.

**“The difference between good and GREAT is in the execution of the details.”**  
**Gary Brawley, ASGCA**



# CLIENT TESTIMONIES

## DESERT MOUNTAIN PROPERTIES

"I remember the first time I met Gary Brawley in the late 90's, I saw a young man with tremendous integrity and passion for the game of golf that I knew would eventually become one of the leaders in our industry. I have been privileged to watch Gary become one of the most highly respected and sought after Golf Course Architects not only in the highly competitive Arizona market but across the country. Today, I still value the time Gary and I are able to play golf or even have a short discussion about the design, construction and even the maintenance of golf course."

**Shawn Emerson, Director of Agronomy**

## IN-2-IT STUDIOS

"I have had the privilege to work closely with Gary on several projects, from the master planning and routing of a golf course as part of a large master planned community, to currently the turf reduction and landscape of golf courses to help with water usage. The one thing about Gary is there is no ego, he realizes it takes a team to successfully pull off any level of project. Gary is not afraid to take a stance when he truly believes it is in the best interest of the client but he always has a strong foundation of support and reason and not just because it is something that he wants."

**Rich Ferrero, RLA, ASLA,  
Principal**

## MARVIN MILLS IRRIGATION DESIGN

"Having worked with a lot of different golf course architects, the one thing that stands out about Gary is his leadership, organization and management skills. Yes, he is a great golf course architect, that is what he does, but I believe it is these other characteristics that separates Gary from his competition. Following construction meetings, site visits, general inquiries Gary is always very thorough with his follow-up and that is why the projects he is involved with are always completed to the highest level."

**Marvin Mills, President**

## MESA COUNTRY CLUB

"As a member of Mesa Country Club for over 30 years, when our membership expressed the desire to make improvements to our golf course I knew we needed the direction of a qualified Golf Course Architect. We had a master plan done previously, with the exception of a few small things nothing was really ever done. After interviewing several highly acclaimed golf course architect, we selected Gary Brawley and Tripp Davis. Today, Gary is solely responsible for working on our master plan and helping managing our "projects" each summer. What I have enjoyed is watching Gary interact with our membership, his passion for the game is infectious and that is starting to migrate through our club and they are fully supporting his proposed changes. What happens next is an exciting time for our club and I am confident in Gary's leadership."

**John Swofford, Club President**

## OB Sports

"Gary is a very talented architect that I have personally worked with on a couple of projects, and he certainly has my highest endorsement. Furthermore, Gary is a laid-back guy that is easy to work with and he enjoys getting hands-on with his projects (one of the things I like about him). Everyone that has been a part of our projects with Gary from owner's to members, or GM's to superintendents have found him very easy to get along with and his work is exceptional."

**Luke Beardmore, Senior VP Agronomy, Construction & Landscape**

# CLIENT TESTIMONIES

## RECREATION CENTER OF SUN CITY

"I could not be more pleased with the workmanship and professionalism that Gary Brawley has displayed in working with our community and Board of Directors during his tenure. It would be easy for a consultant to accept status quo from project to project, but over the years we have witnessed Mr. Brawley's innovation and industry leadership that has allowed us to continue to advance our facilities through golf course renovation projects.

In a day and age of tight budgets and saying one thing and doing another, we can attest that now having completed six golf course renovations, that each project has been completed on-time and on budget and I can confidently attest that this can be directly correlated specifically to the involvement of Gary Brawley on all of these projects."

**Jan Ek, CMCA, PCAM, CPFM**  
General Manager

## SHEA HOMES

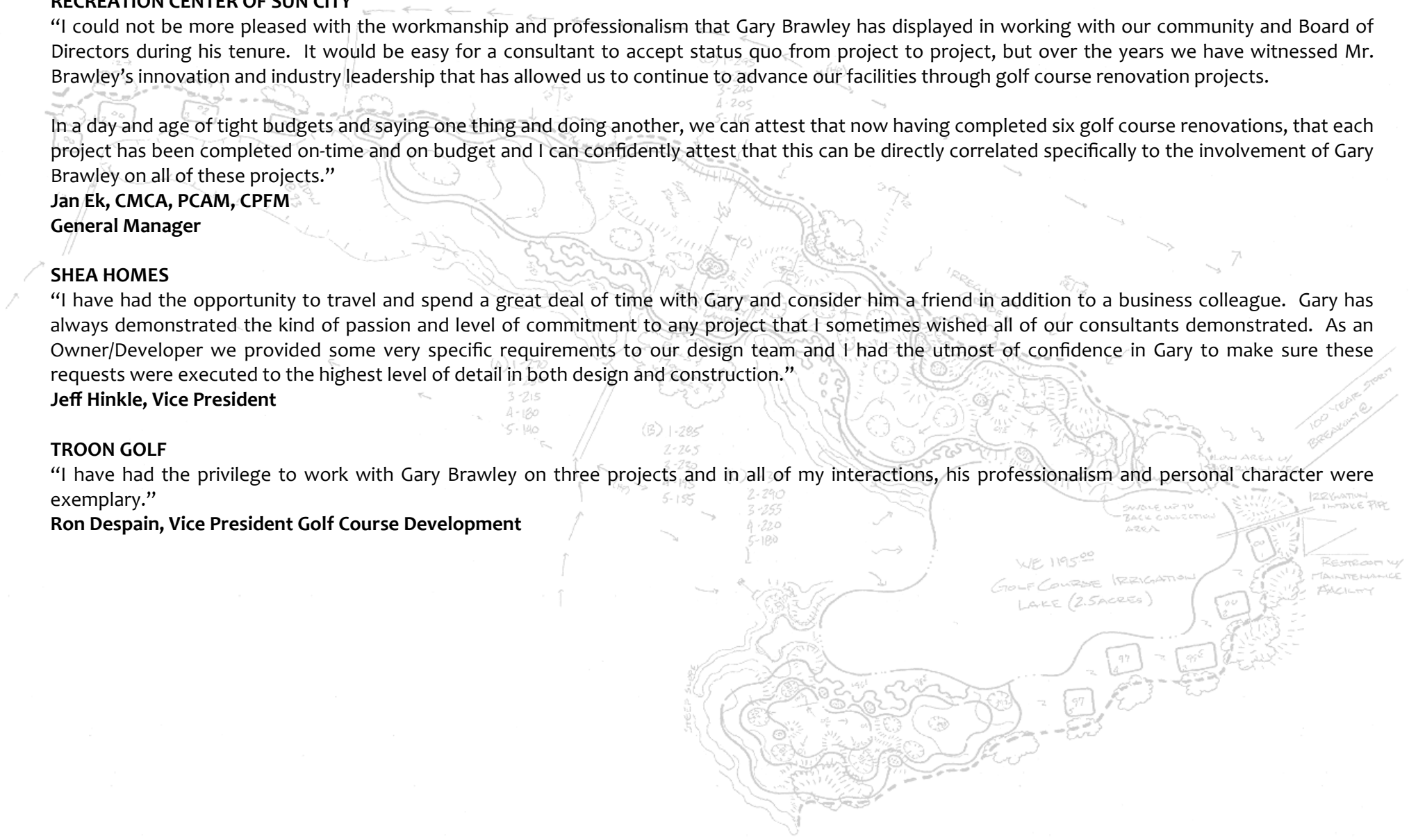
"I have had the opportunity to travel and spend a great deal of time with Gary and consider him a friend in addition to a business colleague. Gary has always demonstrated the kind of passion and level of commitment to any project that I sometimes wished all of our consultants demonstrated. As an Owner/Developer we provided some very specific requirements to our design team and I had the utmost of confidence in Gary to make sure these requests were executed to the highest level of detail in both design and construction."

**Jeff Hinkle, Vice President**

## TROON GOLF

"I have had the privilege to work with Gary Brawley on three projects and in all of my interactions, his professionalism and personal character were exemplary."

**Ron Despain, Vice President Golf Course Development**



# PROFESSIONAL SPEAKING ENGAGEMENTS

## Cactus and Pine Golf Course Superintendents Association

**Location:** Goodyear, Arizona

**Date:** 2017

**Topic:** Bunkers, Bunker Liners and Bunker Sand - Why the fuss?

## Arizona Water Summit

**Location:** Scottsdale, Arizona

**Date:** 2016

**Topic:** Turf Reduction and Water Conservation on the Golf Course

## Golf Course Builders Association of America Regional Seminar

**Location:** Mesa, Arizona

**Date:** 2016

**Topic:** Golf Course Water in an Arid Environment

## Golf Academy of America

**Location:** Phoenix, Arizona

**Date:** 2002—Current (3 Times Per Year)

**Topic:** Golf Course Design - From Start to Finish and Everything In Between

## Golf Academy of America

**Location:** Dallas, Texas

**Date:** 2013 - Current (3 Times Per Year)

**Topic:** Golf Course Design - From Start to Finish and Everything In Between

## Cactus and Pine Bunker Renovation Symposium

**Location:** Phoenix, Arizona

**Date:** Fall 2013

**Topic:** Bunker Renovation & Construction - Choosing the Right Liner, Bunker Sand and Bunker Maintenance

## Crittenden Golf Conference

**Location:** Dallas, Texas

**Date:** Fall 2012

**Topic:** Golf Course Renovation, Restoration & Reconstruction - How to Define and the Value Found in Each

## USGA Southwest Section Educational Seminar

**Location:** Dallas, Texas

**Date:** Spring 2011

**Topic:** Keys to a Successful Golf Course Renovation - Case Study Sun City South Golf Course

## Cactus and Pine Golf Course Renovation Seminar

**Location:** Phoenix, Arizona

**Date:** Fall 2009

**Description:** Planning for Your Golf Course Renovation - The Steps to A Successful Master Plan

## Crittenden Golf Conference

**Location:** La Quinta, California

**Date:** Fall 2007

**Description:** The Impact of Playing Equipment on the Modern Game of Golf



# CONTACT INFORMATION



**GOLF DESIGN**

**MAIN OFFICE**

PO Box 6483

(A) 1-272 Peoria, Arizona USA 85385

2-250  
3-215 Phone: 602-617-0038

4-200  
5-185 Email: [gary@gbgolfdesign.com](mailto:gary@gbgolfdesign.com)



Facebook - [gbgolfdesign](https://www.facebook.com/gbgolfdesign)



Twitter - [@gbgolfdesign](https://twitter.com/gbgolfdesign)



Linkedin - [gbgolfdesign](https://www.linkedin.com/company/gbgolfdesign)



Instagram - [gbgolfdesign](https://www.instagram.com/gbgolfdesign)

